



# Tokyo International University

## Information for House Residents

*TIU International Houses provide a place for mainly international students who have never lived in Japan to settle into life at TIU and meet fellow students. This is just one of the options that we recommend for your new life as a student.*

## Location

Most of the university-offered dorms are located near the Kawagoe Campus. Please check your campus location as indicated below.

■ **ALL New Undergraduate Students:** You will attend your courses at Kawagoe Campus 1 during the 1st semester. From the 2nd semester onward, your courses will be held at the Ikebukuro campus.

■ **ALL Transfer, Graduate, Exchange, and JSP Students:** Your courses will be held at the Ikebukuro campus (not at Kawagoe Campus 1).

## Admission Period

As a general rule, allowed residency period is within one semester. The last date that you need to move out (end of July for those move-in in spring/ end of February for those move-in in Fall) will be determined and announced by the International Exchange Office. After the admission period is over, residents are to move to other accommodations such as apartment and privately-owned dorms.

## Residence Staff

### House Managers:

They are responsible for the administration and management of the residence.

International House <b>R1</b>	House Manager(s) live in the dorms and work Mondays through Fridays from 8:00 to 20:00.
International House <b>R2</b>	House Manager works Mondays through Fridays from 8:00 to 20:00.
International House <b>R5</b>	House Manager works Mondays through Fridays from 9:00 to 17:00.
International House <b>U6</b>	Support company is available every day from 9:00 to 19:00.
International House <b>UR</b> Kitasakado & Kamifukuoka & Niza	

### Residence Assistants (RAs):

Several TIU students are assigned to live in the International House to help residents adjust to life in the dorms. RAs are assigned in the dorms for the benefit of residents. Please respect them and be cooperative.

## About TIU International Houses

### Who can live in the International House?

When allocating rooms, priority will be given to international E-Track students who live outside of Japan before university enrollment. A room will also be assigned to international students currently residing in Japan or/and Japanese students currently residing abroad only if there is a vacancy room.

### TIU International House Admission Regulations

TIU International House Admission Regulations/Rules will be given to you when you move-in. All residents are required to follow all the rules. An order may be issued to leave the dorm if you do not comply with the rules or the instructions of the university.

### Rent Payment

Monthly rent will NOT be calculated by the daily rate even though you move in during the middle of the month. However, the rent for the month of “move-in period” will be calculated and determined by the university.

### [Rent for the month you move-in]

Please check the rent for March/April (the month you move in) in the following pages.

### [Rent for the month you move-out]

The full amount of the monthly rent will be charged even if you move out in the middle of month. Also, a **vacate form must be submitted one month prior to your move out date.**

### [How to pay]

You are required to pay your monthly rent using the automatic bank withdrawal system. After you open your bank account in Japan, you need to register your Japanese bank account information at TIU so your rent can be automatically withdrawn from your registered bank account every month (TIU covers all the bank fees). Since it takes about 2 months to complete the registration process, you need to pay your first 2 months' rent, including house admission fee by cash.

## Internet

Free internet is available in the dorms. If you would like to use the internet, please bring your own computer/mobile phone/tablet. There are no public computers provided in the dorms.

[NOTE]: Free internet is provided for the purpose of study. Please be advised that it is not a high-speed internet for watching movies or playing online games.

## Provided and NOT provided items

Provided items	NOT provided items
<ul style="list-style-type: none"><li>- Furniture (Bed, desk, chair, closet/storage box)</li><li>- Bedding set (mattress, sheets, blanket, futon, pillow)</li><li>- Curtains</li><li>- Refrigerator</li><li>- Microwave</li><li>- Air conditioner</li><li>- Laundry machine</li><li>- Trash box</li><li>- Electronic Kettle (R5&amp;UR only)</li><li>- Toaster oven (R5 only)</li><li>- Kitchen knife and cutting board (R5 only)</li></ul> <p><b><u>Items not listed above are NOT provided.</u></b></p>	<ul style="list-style-type: none"><li>- Food including condiments</li><li>- Kitchen utensil (Pot, frying pan, kitchen knife, cutting board etc.)</li><li>- Plates, cups, cutlery</li><li>- Dish detergent/ Sponge</li><li>- Towels</li><li>- Bath items/ hygiene items (Shampoos, treatment, body soap, toothbrush)</li><li>- Laundry detergent</li><li>- Computer, phone</li><li>- Slippers</li><li>- Electric power bar</li><li>- Clothes hangers</li><li>- Hair Dryer</li><li>- Alarm clock</li></ul>
<div><b><u>Items NOT allowed in the dorms</u></b> ■ Large speakers and amplifiers ■ Pets ■ Alcohol ■ Flammable items</div>	

## Insurance for personal belongings

TIU does not provide insurance for personal belongings brought into the dorms. All students must have appropriate insurance coverage for their own personal property against loss or damage by fire, theft, etc. during the term of their stay.

## Smoke Free

International House is completely smoke free.

## Any questions?

Please refer to the FAQ pages.

# International House R1 (Single Room)



**Residence Name** : Tokyo International University International House R1

**Address** : 2531-1 Matoba, Kawagoe, Saitama 350-1101, Japan

## House Fees

(Amounts are stated in JPY)

Admission Fee (Security, cleaning fees)	Monthly Rent	Utilities Electricity / Water / Gas
30,000	54,000	<b>NOT</b> Included in the monthly rent.

## Payment Schedule

Month	Amount	Due date	Payment Method
March + April	<u>Move-in in the middle of March</u> Admission Fee (30,000) March rent (10,800), April rent (54,000) <b>Total: 94,800</b>	<b>April 6th</b>	<b>Cash</b>
May and after	<b>54,000</b>	<b>5<sup>th</sup> of each month</b>	Automatic bank withdrawal

※Exchange students should follow the other instruction on the rent amount and payment method.

## House Information

- Number of Rooms: 75
- Size of Room: 17.55 m<sup>2</sup>



## Facilities

### Furniture & Laundry

Furnished with a bed with a mattress, a desk, a chair, a fridge, a microwave, an air conditioner, a closet, a kitchenette, and a bathroom. Laundry facilities are located inside the building. The cost of using the laundry machines is included in the monthly rent fee.

### Lounge Room

Small lounges are located on each floor in the dorm.

### Memo

The building is located about 15 min walk from Kawagoe campus 1 where the E-Track courses for the first semester are held.

## Utilities (Gas/ Water/ Electricity)

Each resident needs to make a contract with the utility service providers on individual basis.

The house managers/RAs will help residents do this in order to start the services. Each service provider will issue a bill each month and users are asked to pay the fees according to the methods indicated by the providers.

### How much is the average utility bill monthly?

It totally depends on how much you use but here is the average amount for each bill.

- Gas: 3,500 yen~ (per month)
- Electricity: 5,000 yen~ (per month)
- Water: 2,500 yen~ (per two months)

# International House R2 (Male Shared Room)

**Residence Name** : Tokyo International University International House R2

**Address** : 2532-1 Matoba, Kawagoe, Saitama 350-1101, Japan



## House Fees

(Amounts are stated in JPY)

Admission Fee (Security, cleaning fees)	Monthly Rent	Utilities Electricity / Water / Gas
25,000	36,000	Included in the monthly rent*.

\*If the usage of gas/electricity/water exceeds the limit, extra fees will be charged to that rooms resident(s).

## Payment Schedule

Month	Amount	Due date	Payment Method
March + April	<u>Move-in in the middle of March</u> Admission Fee (25,000) March rent (7,200) April rent (36,000) <b>Total: 68,200</b>	<b>April 6<sup>th</sup></b>	<b>Cash</b>
May and after	<b>36,000</b>	<b>5<sup>th</sup> of each month</b>	Automatic bank withdrawal

※Exchange students should follow the other instruction on the rent amount and payment method.

## House Information

- Number of Rooms: 30 (60 residents)
- Size of Room: 16.09 m<sup>2</sup>

## Facilities

### Furniture

Furnished with 2 beds with mattresses, 2 desks, 2 chairs, a fridge, a microwave, an air conditioner, a closet, a kitchenette, and a bathroom.

### Laundry

Laundry facilities are located inside the building. The cost of using the laundry machines is included in the monthly rent fee.

### Lounge Room

A big lounge is located on the 1<sup>st</sup> floor of the dorm.

### Memo

The building is located about 15 min walk from Kawagoe campus 1 where the E-Track courses for the first semester are held.



# International House R5 (Female Shared Room)

**Residence Name** : Tokyo International University International House R5

**Address** : 2509-1 Matoba, Kawagoe, Saitama 350-1101, Japan



## House Fees

(Amounts are stated in JPY)

Admission Fee (Security, cleaning fees)	Monthly Rent	Utilities Electricity / Water / Gas
25,000	44,000	Included in the monthly rent*.

\*If the usage of gas/electricity/water exceeds the limit, extra fees will be charged to that rooms resident(s).

## Payment Schedule

Month	Amount	Due date	Payment Method
March + April	<u>Move-in in the middle of March</u> Admission Fee (25,000) March rent (8,760) April rent (44,000) <b>Total: 77,760</b>	<b>April 6<sup>th</sup></b>	<b>Cash</b>
May and after	<b>44,000</b>	<b>5<sup>th</sup> of each month</b>	Automatic bank withdrawal

※Exchange students should follow the other instruction on the rent amount and payment method.

## House Information

- Number of Rooms: 22 (44 residents)
- Size of Room: 19 m<sup>2</sup>

## Facilities

### Furniture

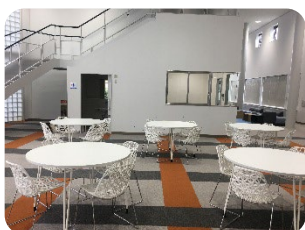
Furnished with 2 beds with mattresses, 2 desks, 2 chairs, 2 closets, a small fridge, and 2 air conditioners.

### Shared Area

The building has two floors, each with a shared kitchen including 5 sinks/gas stoves, toilet, shower and laundry rooms.

### Memo

The building is located about 15 min walk from Kawagoe campus 1 where the E-Track courses for the first semester are held.





# International House R6 (Female Shared Room)

**Residence Name** : Tokyo International University International House R6 (Name of the building: First Page)

**Address** : 2-4-7 Kasumigaseki-kita, Kawagoe, Saitama 350-1109, Japan



## House Fees

(Amounts are stated in JPY)

Admission Fee (Security, cleaning fees)	Monthly Rent	Utilities Electricity / Water / Gas
25,000	44,000	Included in the monthly rent*.

\*If the usage of gas/electricity/water exceeds the limit, extra fees will be charged to that rooms resident(s).

## Payment Schedule

Month	Amount	Due date	Payment Method
March + April	<u>Move-in in the middle of March</u> Admission Fee (25,000) March rent (8,760) April rent (44,000) <b>Total: 77,760</b>	<b>April 6<sup>th</sup></b>	<b>Cash</b>
May and after	<b>44,000</b>	<b>5<sup>th</sup> of each month</b>	Automatic bank withdrawal

※Exchange students should follow the other instruction on the rent amount and payment method.

## House Information

- Number of Rooms: 8 (16 residents)
- Size of Room: 47 m<sup>2</sup>

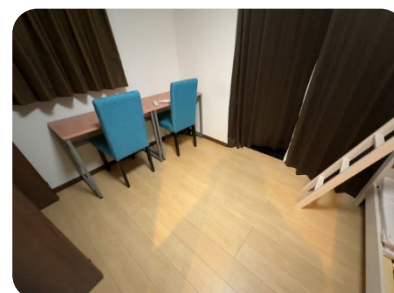
## Facilities

### Furniture

Furnished with 2 beds with mattresses, 2 desks, 2 chairs, 2 closets, a small fridge, and an air conditioner.

### Memo

The building is located about 5 min walk from Kawagoe campus 1 where the E-Track courses for the first semester are held.



# International House UR Kitasakado

## (Male Apartment Style - Shared)



Residence Name : Urban Renaissance

Address①(start from 10/11) : 10 or 11 -●●-●●, Izunoyamacho, Sakado, Saitama 350-0275, Japan.

Address②(start from 12) : 12-●●-●●, Suehirocho, Sakado, Saitama 350-0272, Japan.

### House Fees

(Amounts are stated in JPY)

Admission Fee (Security, cleaning fees)	Monthly Rent	Utilities Electricity / Water / Gas
25,000	A: 31,000/ B: 33,000/ C: 35,000	Included in the monthly rent*.

\*If the usage of gas/electricity/water exceeds the limit, extra fees will be charged to that rooms resident(s).

### Payment Schedule

Month	Amount	Due date	Payment Method
March + April	<p><b>Move-in in the middle of March</b></p> <p>Admission Fee (25,000)</p> <p>March rent (A: 6,180, B: 6,600, C: 6,960)</p> <p>April rent (A: 31,000, B: 33,000, C: 35,000)</p> <p><b>Total: A: 62,180, B: 64,600, C: 66,960</b></p>	<b>April 6<sup>th</sup></b>	<b>Cash</b>
May and after	<b>A: 31,000, B: 33,000, C: 35,000</b>	<b>5<sup>th</sup> of each month</b>	Automatic bank withdrawal

※Exchange students should follow the other instruction on the rent amount and payment method.

### House Information

- Number of Rooms: 25 (75 residents)
- Size of Unit: 47 m<sup>2</sup> (A: 6.51 m<sup>2</sup>, B & C: 8.66 m<sup>2</sup>)

### Facilities

#### Furniture

Share space: kitchen, a fridge, a microwave, an electronic kettle and a laundry machine.

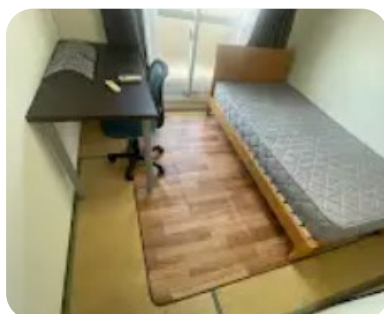
Each room: a bed with mattress, a desk, a chair, an air conditioner and closet.

#### Laundry

Washer is located in each unit. The cost of using the laundry machine is included in the monthly rent.

#### Others

International House UR Kitasakado is located in Sakado city. You can take a train from Kita-Sakado station to Kasumigaseki station and it takes about 10 minutes. ※Commuter pass: 3,070 yen/month (not included in the rent) . Everyone has their own private room.





# International House UR Kamifukuoka (Male/Female Apartment Style - Shared)



Residence Name : Urban Renaissance Kamifukuoka

Address①(start from 23) : 23-●●●●, 3-1 Kasumigaoka, Fujimino, Saitama 356-0006, Japan.

Address①(start from 9/12/13) : 9/12/13-●●●●, 1-4, Kasumigaoka, Fujimino, Saitama 356-0006, Japan.

## House Fees

(Amounts are stated in JPY)

Admission Fee (Security, cleaning fees)	Monthly Rent	Utilities Electricity / Water / Gas
25,000	44,000	Included in the monthly rent*.

\*If the usage of gas/electricity/water exceeds the limit, extra fees will be charged to that rooms resident(s).

## Payment Schedule

Month	Amount	Due date	Payment Method
March + April	<p><u>Move-in in the middle of March</u></p> <p>Admission Fee (25,000)</p> <p>March rent (8,760)</p> <p>April rent (44,000)</p> <p><b>Total: 77,760</b></p>	<b>April 6<sup>th</sup></b>	<b>Cash</b>
May and after	<b>44,000</b>	<b>5<sup>th</sup> of each month</b>	Automatic bank withdrawal

※Exchange students should follow the other instruction on the rent amount and payment method.

## House Information

- Number of Rooms: 5 (20 residents)
- Size of Unit: 75 m<sup>2</sup>

## Facilities

### Furniture

Share space: kitchen, a fridge, a microwave, an electronic kettle and a laundry machine. Each room: a bed with mattress, a desk, a chair, an air conditioner and closet.

### Laundry

Washer is located in each unit. The cost of using the laundry machine is included in the monthly rent.

### Others

International House UR Kamifukuoka is located in Fujimino city. You can take a train from Kamifukuoka station to Ikebukuro station and it takes about 31 minutes.

Everyone has their own private room

※Commuter pass: 4,680 yen/month  
(not included in the rent)



# International House UR Niza

## (Male Apartment Style - Shared)



Residence Name : Urban Renaissance Niiza

Address : ●-●●-●●, Niiza 3, Niiza City, Saitama 352-0006, Japan.

### House Fees

(Amounts are stated in JPY)

Admission Fee (Security, cleaning fees)	Monthly Rent	Utilities Electricity / Water / Gas
25,000	A: 35,000/ B: 37,000/ C: 39,000	Included in the monthly rent*.

\*If the usage of gas/electricity/water exceeds the limit, extra fees will be charged to that rooms resident(s).

### Payment Schedule

Month	Amount	Due date	Payment Method
March + April	<u>Move-in in the middle of March</u> Admission Fee (25,000) March rent (A: 6,960, B: 7,380, C: 7,800) April rent (A: 35,000, B: 37,000, C: 39,000) <b>Total: A: 66,960, B: 69,380, C: 71,800</b>	<b>April 6<sup>th</sup></b>	<b>Cash</b>
May and after	A: 35,000, B: 37,000, C: 39,000	5 <sup>th</sup> of each month	Automatic bank withdrawal

※Exchange students should follow the other instruction on the rent amount and payment method.

### House Information

- Number of Rooms: 8 (24 residents)
- Size of Unit: 52 m<sup>2</sup> (A: .6.44 m<sup>2</sup>, B: 7.31 m<sup>2</sup>, C: 7.94 m<sup>2</sup>)

### Facilities

#### Furniture

Share space: kitchen, a fridge, a microwave, an electronic kettle and a laundry machine.

Each room: a bed with mattress, a desk, a chair, an air conditioner and closet.

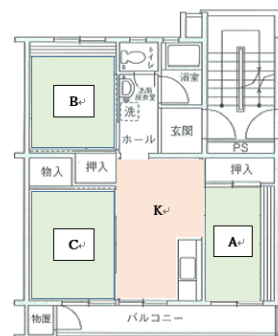
#### Laundry

Washer is located in each unit. The cost of using the laundry machine is included in the monthly rent.

#### Others

International House UR Niza is located in Niza city. You can take a train from Yanasegawa Station to Ikebukuro station and it takes about 30 minutes. ※Commuter pass: 4,410 yen/month (not included in the rent)

Everyone has their own private room.



# FAQ (Frequently Asked Questions)

Can I move in earlier/later than the set move-in period?	No. You can only move in during the set move-in period.
Are Dormitory rooms equipped with waterproof functions?	No, all areas of Dormitory rooms (except only the bathroom) are not equipped with waterproof functions. Therefore, if any water-leak incidents happen, the residents shall be charged a very expensive fixing fee of 100,000~120,000JPY = about 700~800 USD (depends on severity of the incidents). We strongly advise the residents not to leave water pills on the floor, especially inside the toilet. Please kindly check the "prohibited activities" at TIU dormitories below for more details.
Can I move in after 3 pm?	No. If you come after 3 pm, you may not be able to get your room key to move in.
Can my family stay in my room when I'm at school?	No. It is prohibited that non-resident(s), even your family member, stay in the dorm when the resident is not present.
Can I send my luggage to the dorm before I move in?	No. Please do NOT send any luggage to the dorm before you move in. There will be NO ONE to receive it (house manager will refuse receiving all the items which do not belong to the current residents).
Is there anyone who can help me and my family show around the campus and city?	No. Please be advised that student staff are provided for residents, not for their family members.
Can I change my room type? (ie: Single ⇒ Share)	No. You cannot change your room type once you are informed of your assigned room.
Can I move to different dorm if there is a vacate room?	No. You cannot change your room type once you are informed of your assigned room.
Can I change my roommate if we don't get along?	As a general rule, you cannot change your roommate to be fair to everyone.
Can I request my roommate?	No. Room assignment will be decided by the university. However, you may consult with the university prior to the assignment process.
What procedure do I need to enter the dorms?	All residents must read the "International House Admission Regulations"/"House rules" and the "Information for House Residents" and submit <b>online</b> the House Admission Form (by Google form) to the International Exchange Office (IEO) on the day they move into the dorms.
Will there be an orientation for new residents?	Yes. The orientation will be held on the day of your arrival and also during the Arrival Orientation.
Are there any admission requirements to stay in the dorms?	Priority is given to international students living outside of Japan prior to enrollment. If there are still vacant rooms available, international students living in Japan and students with Japanese citizenship living abroad will be considered.
Can I live in the dorm until I graduate from TIU?	No, allowed residency period is within one semester. The last date that you need to move out will be determined and announced by the International Exchange Office (end of July for those move-in in Spring /end of February for those move-in in Fall).
Can I apply for the International House admission after the start of the school year?	As a general rule, students can only apply for the International House during the application period is open and residents can move into the dorms during the designated move-in period only.
What is the monthly room rent?	<b>R1&amp;: 54,000 yen</b> <b>R2 &amp;: 36,000 yen</b> <b>R5 &amp; R6 &amp; UR Kamifukuoka: 44,000 yen</b> <b>UR Kitasakado: A 31,000/ B 33,000/ C 35,000 yen</b> <b>UR Niza: A 35,000/ B 37,000/ C 39,000 yen</b>

Are there any fees incurred if I cancel my dorm reservation?	You can cancel your dorm reservation before the university's designated date without paying any fee. After that date, a cancellation fee will apply. Detailed instructions will be provided when the room assignment results are sent to you.
What is the admission fee? Is it refundable?	Admission fee is mainly for cleaning when you move out and it is non-refundable.
How can I pay the rent?	All residents must have a bank account in Japan. The rent will be automatically withdrawn from your bank account each month. NOTE: Until the automatic bank withdrawal has been set up, rent must be paid in cash. This may take two months.
Can I pay my rent in a different way?	No. You can only pay your rent by automatic bank withdrawal. Payments by credit card or international bank transfer are not accepted.
How can I pay the utility bills for electricity, water, and gas? ( <b>R1 residents only</b> )	First, residents will make a contract with each service provider on an individual basis. Bills will be mailed to residents monthly from the service providers. Instruction of how to pay your bill is in the "House Information Manual" which you will find in your room.
Is the room for single occupancy only? Can I share a room with another person?	<b>R1</b> is for single occupancy only. <b>R2 &amp; R5 &amp; R6</b> are for double occupancy only. <b>UR Kitasakado/Niza</b> is for triple occupancy only. <b>UR Kamifukuoka</b> is for quadruple occupancy only.
Is it ok for a family member to live with me at the dorms?	No. It is not allowed to have your family member(s) stay in your room for a night. They can visit you only within the visiting times (9:00 – 17:00).
Do I need to buy bedding and linen by myself?	No. All residents are provided with a bedding/linen set for free. This set needs to be returned when they move out.
Do male and female students live in the same building?	<b>R1 only.</b> However, the areas for female and male residences are separated by a wall. Accessing areas of the opposite gender is strictly prohibited.
Is there Internet available in the dorms?	Yes. Free internet is available at the dorms. It is provided for the purpose of study. Therefore, it is not a high-speed internet.
Do the dorms offer a meal plan?	No. There is no meal plan.
Is there a cafeteria in the dorms?	No. There are no cafeterias inside the dorms. You can use the ones on Campus.
What are the procedures for filing the Room Inspection Report during move-in?	<b>【For R1, R2, R5 Residents】:</b> At the time of move-in, all residents are required to fill in a Room Inspection Report by themselves in their own room, and submit it to the house manager <u>in person</u> on the same day. <b>【For ALL UR(s) and R6 Residents】</b> All resident of UR(s) and R6 dorms are required to fill in a Room Inspection Report and submit it <u>online to the university by (google form)</u> . Information will be provided in the "Move-in "procedure, which will be sent to you later.
Can I ask the House Manager to receive my parcels delivered to the dorms when I am not there?	No. House Managers will not receive any parcels delivered to the dorms on behalf of the residents. When you expect to receive parcels, including cash-on delivery, it is solely your responsibility to be home to receive it.
Are there residence staff members who understand English?	Yes. Resident assistants (RAs) can speak English. They will act as a translator when you communicate with the house managers if needed.
Who are the Resident Assistants (RAs)?	An RA is a student who lives in the dorms and supports the residents while they are adjusting to dorm life.
Can I get an access map from Campus 1 to Campus 2?	Access map will be given to you before you move in.

Are there parking spaces for a car or a bicycle?	There is a parking space for bicycles at each dorm. Cars are not allowed to be parked at the dorms.
What are the procedures for getting a bicycle parking spot on the dorm's property?	You need to acquire a bicycle parking permit (sticker) from the Student Affairs Office and put it on your bicycle.
Is there a curfew in the dorms?	No, there is no curfew in the dorms. However, returning to the dorms after 25:00 (1:00 am) will be considered as an overnight stay, so an "Overnight Leave Request" form needs to be submitted online in advance.
What are the dorms rules?	Please refer to the Tokyo International House Admission Regulations. (The information will be sent to you later, which is included in the "Move in" procedure).
Can I smoke at the dorms? Is there any smoking area?	No. TIU campus and the International Houses are completely smoke free.
Can I stay at the dorms during school vacation periods?	Yes, you can stay in the dorm during school vacation periods.
Do I need to pay rent for the month that I don't stay in the dorms, such as during spring/summer recesses?	Yes, you still need to pay the monthly rent even if you are back in your country for the whole month.
During the school vacation periods, can I rent my room to my friend?	No. Subleasing all or a portion of a dorm room to another party is prohibited.
In the case of emergency, whom should I contact at the dorms?	Please contact the house manager/Support center first. They will contact the appropriate person or department depending on the situation to help the residents.
What should I do if I lose my room key?	You need to come to the International Exchange Office or talk to the house manager immediately. It is your responsibility to cover all the fees to re-issue/ make a new key.
Can my family or friends visit me at the dorms? Do I need permission to have visitors in the dorms?	As a rule, only family members (same gender as yours) of the residents are allowed to visit the dorms during visiting times from 9:00 – 17:00. The family members must receive an Entry Pass from the house manager/IEO.
Can I vacate the dorms anytime I want?	Yes, however you must submit a Vacate Form at least one month before moving out.
What are the procedures for vacating the room?	The Vacate Form must be submitted online to the International Exchange Office one month prior to leaving the dorms. Information about Move-out procedures will be provided when you move-into the dormitory. Also, more instructions will be given to you once your vacate form is accepted.
At the time of moving out, will I be charged extra fees for things like cleaning, damages or trash disposal?	Yes, residents will be charged a very expensive cleaning and trash disposing fees (range from 50,000 JPY~120,000) if the resident do not clean up his/her room before the scheduled room inspection time. Also, if any damages are identified in the move-out Room Inspection Report, the resident is responsible for the repair cost. If any belongings/ trash/ garbage are left at the dormitory, a trash disposing fees (range from 50,000 JPY~120,000) will be applied to the residents.
Are there situations where a resident is forced to move out from the dorms?	Yes, if a resident does not comply with the Admission Regulations or the instructions of the university, the resident will be ordered to vacate the dorms.

**We are all looking forward to meeting you here at the International House!**